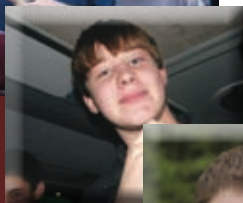
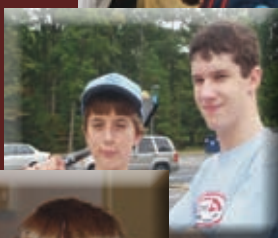




2 Peter 1:3-8

OCTOBER:
Standing on
the Promises of
Godliness



John Smethurst

My Story: Five Years of Small Groups

Five years ago, John Smethurst was a Senior at the College of William and Mary, majoring in English, and volunteering as a Small Group leader for a group of Middle School boys. John and his family had long been part of the Chapel family and John had, himself, been a participant in the Chapel's Student Ministries.

5 Years

Now finish the work, so that your eager willingness to do it may be matched by your completion of it, according to your means. 2 Corinthians 8:11

As John helped to lead the Small Group of Middle School boys that year, he realized a desire to watch these boys grow in their faith, just as he had grown in his faith as a student and as a student leader at the Chapel.

In the five years since it began, this core group of six Middle School boys has increased to a group of 25 High School Seniors who meet

regularly with John, College Coordinator Evan Muro, and Pastoral Intern Luke Kincaid to study God's Word, learn to grow in their faith, and just "hang out" together.

Today John is in his fifth year as a member of the Chapel staff, beginning as Technologies Associate with Student Ministries, and now as Production Assistant in the Chapel's Production Services Ministry.

"In the last five years," says John, "I have watched my Small Group grow in so many ways. They've matured so much since I started leading them when they were in 6th grade. And, they are all now taller than me as well! They've grasped a real knowledge of God's Word and how to apply it to their lives, and they've spread the Good News of Jesus in many different ways."

Some of these young men are now members of the Student Ministry Worship Team, others show Christ's love in the many sports they are involved in, and several are now leading Middle School Small Groups! "They have really grown into young men," added John, "and I am so proud of them."

God continues to use John and the Chapel to impact the lives of Students as he helps lead this Small Group of High School Seniors. Their story will be told as part of Student Ministries Sunday today.

What has God done in your life in the past five years?

Share your story: www.wcchapel.org/mystory

Inside

Coming Your Way	2
Vine Life	2
Ministry Spotlights	2
Men's Retreat	3
Chapel Forum	3

Check the *Fall Ministry Guide* or the Chapel website (www.wcchapel.org) for more information on upcoming ministry events.



VINE LIFE:
Adult Discipleship and Equipping Classes

Mini Bible College, Contemporary Issues of Science and Faith, Small Group Leadership Training, and more.
Sundays | First and Second Hours

Complete listing of Vine Life classes available online:
www.wcchapel.org/vinelifelife

NEW CLASS BEGINS OCT. 26: Discover You – Serving God’s Way Sundays through Nov. 23 (5 weeks) |

Room 156 | 9:00 -10:15 a.m. Serving is a gift from God and there is a place just right for you! Commit to five weeks of exploring your personality, spiritual gifts and passions. Then learn how to put it all together and serve God, whether inside these 4 walls or in the community.

Register online: www.wcchapel.org/registration

NOTE: The Vine Life: Connections class scheduled to begin September 28 has been postponed. Please join the Connections class beginning November 2.

Family, I.N.C.: Standing on the Promises of Brotherly Kindness | Sunday, November 2 | 6:30 p.m. **Worship Room**

Family, I.N.C. is “Families Worshiping Together in the Name of Christ.” This is an exciting time for children and their parents to come



together to worship God and learn more about Him. The worship format will allow God’s Word to reach all members of the Family and will include a Promiseland-style lesson. *Arlene Vander Loon* | 941-1578 | avanderloon@wcchapel.org



Women’s Breakfast | Saturday, October 18 | 8 a.m. | **Central Foyer**

Invite your friends and neighbors for breakfast, a time of fellowship, and a testimony from *Laura Urch*. *Debbie Komarnicki* | 564-1729

Floral Guild Fresh altar flowers may be placed in the Worship Room for a special occasion or in honor or memory of a loved one. Cost of these floral arrangements is \$75. Register online to request placement of flowers to commemorate a special occasion or in honor or memory of a loved one. www.wcchapel.org/floral

THIS SUNDAY’S MINISTRY SPOTLIGHTS

Stop by one of the Ministry Spotlights listed below TODAY for more information on these ministry events.

EAST MINISTRY SPOTLIGHT

Family Life Marriage Conference: A Weekend to Remember | November 21-23 | **Two Locations: Richmond and Williamsburg** | \$129 per person

For more than a million people, the Weekend to Remember conference has been a turning point in their marriage. From engaged couples to empty-nesters, it’s never too early or too late to make your marriage flourish. Visit the East Ministry Spotlight today to speak with members of the Chapel family who have participated in one of these conferences. Register for a conference at www.FamilyLife.com/weekend. Use group code 13544 for a \$40 discount on your registration. *Todd and Abby Ellis* | 345-2834 or *Chris and Susan Swynford* | 259-8650

WEST MINISTRY SPOTLIGHT 2

Ministry to Our Military

The Chapel Ministry to our Military welcomes visiting Navy Reservists to Sunday services for the next several weeks. If you would like to host a Reservist for lunch after Sunday services or for information please contact *Paul and Nancy Davis* | 229-1255.



Veteran’s Day Reception | Sunday, November 9, after second service | **Woodward Hall**

Save the date! Please join us for light refreshments as we honor our Chapel veterans and active service members and their families. All are welcome. *Paul and Nancy Davis* | 229-1255.

MEN'S RETREAT 2008
 WINTERGREEN RESORT
 Nov. 7-9

REGISTER ONLINE:
www.wcchapel.org/registration
 MORE INFO:
www.wcchapel.org/mensretreat
 Cost: \$175 | Speaker: Dr. David Eckman
 Join more than 200 men for this getaway weekend! Lodging will be in condominium units by small group, with some hotel style rooms available as well. As always, 1 man = 1 bed. Full and partial scholarships available.

We are a Church of Small Groups Sign up for a Small Group today. Visit www.wcchapel.org/smallgroups and click on the button that says "Looking for a Small Group?" This online resource will allow you to expand your group search and contact individual Small Group leaders. *Pat Cummings, Minister of Community* | 229-7152 | pcummings@wcchapel.org

Chapel FORUM

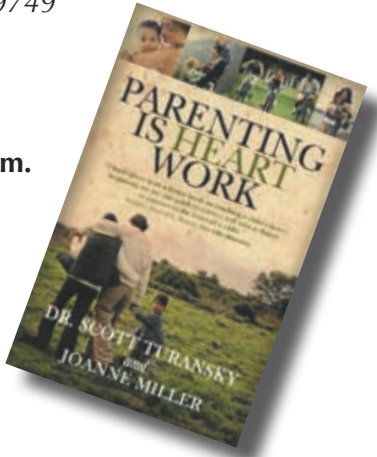
October 26 | 6:30 p.m. | Worship Room

Stephen Ministry Is life more than you can handle right now? Are your health, your attitude, or your relationships suffering? Are you adjusting to a new job, changed marital status, serious illness, or the loss of a loved one? A Stephen Minister can walk with you on a journey toward wholeness. All calls are confidential. *Billy Ray Johnson (men)* | 810-2194 or *Phyllis Leffler (Women)* | leffler2@cox.net



Crown Financial Ministry How well are you managing the assets God has placed in your care? The Chapel has trained money map coaches available to provide one-on-one, confidential financial counsel based upon the same biblical principles taught in the Crown Ministry small group study. *Larry Jenkins* | 258-9749

Fall Parenting Series: Parenting is Heart Work | Wednesdays Through November 19 | 7:00 p.m. | Woodward Hall DVD-based series recommended for parents of children ages 2 through high school. *Parenting is Heart Work* gives you practical tools and steps. Register online: www.wcchapel.org/registration or contact *Eileen Grant* | 941-1566.



Setting the Captives Free
 GUEST SPEAKER:
Mark Earley
President of Prison Fellowship

Mark Earley was an active member of the Chapel family while attending the College of William & Mary, where he earned a B.A. in Religion from William and Mary and a juris doctor degree from Marshall-Wythe School of Law. After leaving William & Mary, Mark served on the staff of Navigators, practiced law for 15 years in Norfolk, served 10 years in the Virginia State Senate, and then served as the Attorney General of Virginia from 1998-2001.

Mark now serves as president of Prison Fellowship. Founded by Charles Colson in 1976, Prison Fellowship has become the world's largest outreach to prisoners and their families, with ministries in 114 countries.

Mark firmly believes prisoners cannot be reformed without accepting the gospel and coming to a personal relationship with Jesus Christ.

Mark will join us in worship on Sunday morning, October 26, and speak on *Setting the Captives Free* Sunday evening at 6:30 p.m.

LOCAL MINISTRY EVENT

The following event is sponsored by a Chapel-supported Local Ministry. Please check the Chapel website (www.wcchapel.org/local-ministry) for more information about this event or ministry.

H-E-A-R-T: 2008 Golf Tournament | Wed., Oct. 22 | 8:30 a.m. | CW Green Course H-E-A-R-T provides hope for victims of sexual assault through the provision of essential and therapeutic support, by affecting positive change in laws influencing their lives, and by educating both the public and professionals commissioned to serve victims.

COMMUNITY NEWS

Farm Fresh Reward receipts are back! Drop off your Farm Fresh Receipts at the Information Desk in the Central Foyer on Sundays or the drop-box in the West (Nursery) Wing during the week.

Stewardship Opportunity Extended: Charitable Donations from an IRA The federal Bailout Bill extended the Pension Protection Act, permitting IRA owners ages 70^{1/2} and older to make direct, tax-free donations of up to \$100,000 per year from an IRA to a "qualified" charitable organization during the 2008 and 2009 tax years. For more information, consult with your financial advisor and visit www.wcchapel.org/giving.



2008 FALL MINISTRY GUIDE

The 2008 Fall Ministry Guide is your comprehensive source for fall ministry events at the Chapel (September - December).

VIEW THE GUIDE ONLINE:

www.wcchapel.org/ministryguide

Copies are also available at the Information Desk and near each exit.

www.wcchapel.org

Sunday audio, the Weekly, online registration, detailed calendar, ministry info, upcoming events, and much more.

2008 GENERAL FUND

	September	Year-to-date (through Sept.)
Offerings	\$ 294,932	\$ 2,309,801
Expenses	\$ 302,123	\$ 2,520,860
Variance	\$ - 7,191	\$ - 211,059

STEWARDSHIP NOTE:

A dated bank record or receipt must accompany all charitable cash tax deductions. We encourage contributions by check with the fund to be designated indicated on the memo section of your check. *All undesignated checks are credited to the General Fund.*

BUILDING THE CHURCH CAMPAIGN

Project Cost	\$ 16,100,000*	*Excludes financing cost
Faith Promises Received	\$ 11,412,938	
Variance	\$ - 4,687,062	

Loan Repayments	\$ 242,000
Loan Balance (August 31, 2008)	\$ 7,525,788*

	September	Year-to-date (through Sept.)
Interest Paid	\$ 38,163	\$ 318,869

PASTORS & STAFF*

Bill Warrick Senior Pastor
Jon Ritner Associate Pastor
Rob Campbell Executive of Administration
Arlene Vander Loon Minister of Education
Travis Simone Minister of Students
Pat Cummings Minister of Community
Ted Cornell Minister of Worship
Steve Hooge Minister of Production Services
Andrew Petty Minister of Communications
Faith Halverson Director of Missions
John Green Director of Congregational Care
Dick Woodward Pastor Emeritus

* Partial list

To learn more about the Chapel, the pastors, and the staff, visit: www.wcchapel.org/about



Williamsburg
Community Chapel

3899 John Tyler Hwy.
Williamsburg, VA 23185
757-229-7152
www.wcchapel.org

Learn about the *Building the Church Campaign*:
www.buildingthechurch.org.

This Week at-a-Glance | October 12 - 19, 2008



Childcare (infant - five years) is provided. Please check with the ministry contact about pre-registration requirements.



Events of interest to middle and high school students and their parents.

DAY/TIME	EVENT	LOCATION / ENTRANCE	CONTACT
TODAY'S SPECIAL EVENTS			
5:15 p.m.	 Youth Instrumental Ensemble	Woodward Hall / Door WEST 2	June Horner 564-8789
6:30 p.m.	 High School Small Groups	SM Worship Rm / Door WEST & EAST 4	Jess Jiao 941-1572
MONDAY OCTOBER 13			
9:15 a.m.	Intercessory Prayer	Prayer Room / Doors EAST 4 & WEST 4	Heather Cordasco 645-3915 Mary Ann Wiley 229-2595
9:15 a.m.	 Body & Soul Aerobics	Woodward Hall / Door WEST 2	Amy Stafford 229-5233
9:30 a.m.	 Moms Morning Out	Door WEST 2 & 3	Susie Calapodas 941-1218
7:00 p.m.	Community Bible Study: <i>Genesis</i>	Woodward Hall / Door WEST 2	Ken Grunst 565-0986 Sheila Hollis 229-2057
7:00 p.m.	Divorce Care	Room 120 / Door EAST 2	Marelyn McGinnis 564-6373
TUESDAY OCTOBER 14			
9:30 a.m.	MOPS Meeting	Woodward Hall / Doors WEST 2 & 3	Amy Brown 564-4573
6:30 p.m.	High School Leader Meeting	The Simone's House	Jess Jiao 941-1572
6:30 p.m.	 Body & Soul Aerobics	Woodward Hall / Door WEST 2	Amy Stafford 229-5233
6:30 p.m.	Open Door Bible Study	Room 221 / Door WEST 2	Patty Kish 564-7232
7:30 p.m.	Celebrate Recovery	Room 120 / Door EAST 2	Steve Flanary 564-8248
WEDNESDAY OCTOBER 15			
7:00 a.m.	Job Transition Support Group	Great Harvest Bread (New Town)	Bill Wright 725-2338
9:30 a.m.	 Moms Morning Out	Door WEST 2 & 3	Susie Calapodas 941-1218
9:30 a.m.	 Open Door Bible Study	Room 221 / Doors WEST 1 & 2	Patty Kish 564-7232
7:00 p.m.	Fall Parenting Series	Woodward Hall / Door WEST 2	Eileen Grant 941-1566
7:00 p.m.	 Middle School Mid-Week	SM Worship Room / Door EAST 3	Alexis Cocker 229-7152
THURSDAY OCTOBER 16			
7:00 a.m.	Men's Fellowship Breakfast	Newport News, Point Plaza 950 J. Clyde Morris Blvd.	Pat Cummings 941-1214
9:30 a.m.	Women's Community Bible Study	Woodward Hall / Door WEST 2	Martha Karam 229-4436
6:30 p.m.	 Body & Soul Aerobics	Woodward Hall / Door WEST 2	Amy Stafford 229-5233
7:00 p.m.	Choir Rehearsal	Worship Room / Door WEST 3	Karen Thompson 229-7152
7:30 p.m.	Quarters' Ministry	Room 211 / Door WEST 1	John Walrath 703-475-1648
FRIDAY OCTOBER 17			
7:00 a.m.	Men's Fellowship Breakfast	Ford's Colony Country Club	Pat Cummings 941-1214
9:15 a.m.	 Body & Soul Aerobics	Woodward Hall / Door WEST 2	Amy Stafford 229-5233
6:00 p.m.	Choir Potluck	Central Foyer / Door WEST 1	Karen Thompson 229-7152
SATURDAY OCTOBER 18			
8:00 a.m.	Men's Testimony Breakfast	Foyer / Door EAST 1	Pat Cummings 941-1214
9:00 a.m.	 High School Fall Retreat	Student Ministry Worship Room / Door EAST 3	Jess Jiao 941-1572
SUNDAY AFTERNOON OCTOBER 19			
4:00 p.m.	Flute Practice	Woodward Hall-Rm 121 / Door WEST 2	Judy Williamson 345-0619
5:15 p.m.	Youth Instrumental Ensemble	Woodward Hall / Door WEST 2	June Horner 564-8789
6:30 p.m.	 High School Small Groups	SM Worship Rm / Doors WEST & EAST 4	Jess Jiao 941-1572

www.wcchapel.org

Sunday audio, the Weekly, online registration, detailed calendar, ministry info, upcoming events, and much

SUNDAY MORNING SCHEDULE

Worship Services: 9:00 & 11:00 a.m.

Childrens' Ministry: 9:00 & 11:00 a.m.
(check-in begins 20 minutes before services)



Kids' Kingdom: Infants/Toddlers



PromiseKids: Ages 3-5



Promiseland: K-5th

Student Ministries: 11:00 a.m.
Middle School: 6th-8th
High School: 9th-12



**VINE LIFE: ADULT
DISCIPLESHIP AND
EQUIPPING CLASSES**

FIRST HOUR (9:00-10:15)

Room 120 | Mini Bible College (Old Testament
Survey Highlights)

Room 122 | Bible Study of First and Second Peter
Room 156 | Small Group Leader Training

SECOND HOUR (10:45-Noon)

Room 120 | Mini Bible College (Old Testament
Survey Highlights)

Room 122 | Bible Study of Revelation
Room 156 | Contemporary Issues of Science and
Faith

RESOURCES

Welcome Center | Central Foyer | Volunteers are here on Sundays to serve newcomers.

Newcomers' Suite | Central Foyer | Newcomers are invited to stop by the Newcomers' Suite after Sunday services to meet Chapel leadership.

Information Desk | Central Foyer | Complete Ministry Information and e-Chapel kiosks. Information Desk attendants are available to assist you on Sundays.

CONNECT Desk | East Foyer | Learn how to get connected at the Chapel or find a place to serve. Stop by the CONNECT Desk in the East Foyer after Sunday Services.

Resource Center | East Foyer | Open Sun. 9:45 a.m. - 12:45, Wed. 9:00 a.m. - 5:00 p.m. | Sermon recordings, Small Group resources, and lending library.

2008 Fall Ministry Guide | The **Fall Ministry Guide** contains information on Chapel ministry events from September through December. The Guide is available near each exit, at the Information Desk in the Central Foyer, and online.

The Weekly | The **Weekly** is available on Sundays, online 24/7, and throughout the week near each exit. Be sure to pick up a copy to stay in tune with the Chapel family.

www.wcchapel.org | Visit the Chapel website for the latest Chapel news, Chapel audio, and a dynamic Chapel audio.

PASTORS & STAFF*

Bill Warrick *Senior Pastor*
Jon Ritner *Associate Pastor*
Rob Campbell *Executive of Administration*
Arlene Vander Loon *Minister of Education*
Travis Simone *Minister of Students*
Pat Cummings *Minister of Community*
Ted Cornell *Minister of Worship*
Steve Hooge *Minister of Production Services*
Andrew Petty *Minister of Communications*
Faith Halverson *Director of Missions*
John Green *Director of Congregational Care*

Dick Woodward *Pastor Emeritus*

* Partial list

To learn more about the Chapel, the pastors, and the staff, visit: www.wcchapel.org/about

ELDERS

Harry Borbe
Sonny Bowers
Karl Muller
Fred Nice
John Paine

Butch Palmer
Glenn Palmer
Bob Pfeifer
Dave Rudy



Williamsburg
Community Chapel

3899 John Tyler Hwy.
Williamsburg, VA 23185
757-229-7152
www.wcchapel.org

2008
Standing *on the*
Promises *of* God



2 Peter 1:3-8

OCTOBER:
Standing on
the Promises of
Godliness

Order of Worship
October 12, 2008
Student Ministries Sunday

Student
Ministries

Sunday, October 12 | 9:00 & 11:00 a.m.

Gathering Song *How Marvelous*

Welcome Alexis Cocker
Middle School Associate

Morning Prayer Evan Muro
College Associate

My Story: Five Years of Small Group Steven Watts
Nick Hill

* Celebration and Worship *Blessed Be Your Name*
None But Jesus
This Is Our God

Service of Ordination: Michael Travis Simone Bill Warrick
Senior Pastor
Michael Simone
Senior Pastor, Spring Branch
Community Church

Offertory *With Everything*

Morning Message *God's Plan for Godliness* Travis Simone
Colossians 1:24-29 Minister of Students

Benediction

* *Congregation Standing*

Minister of Worship, Ted Cornell, is participating in a Billy Graham Association Conference this weekend.

After the service, members of the **Prayer Team** are available at the front of the Worship Room and in the Prayer Room.

Student Ministries Sunday

This morning, our middle school and high school students will lead us in worship, as they do at least three times a year. We extend a special welcome to friends and family of Nina & Travis Simone who join us today to celebrate Travis' service of ordination.

My Story: Five Years of Small Groups

Steven Watts and Nick Hill have been part of a Small Group that began five years ago when they were in Middle School. To learn more about this Small Group and one of the leaders who has guided this group for the past five years, be sure to see today's edition of the *Weekly*.

Flowers in the Worship Room today were placed by Kathryn Arnold in memory of her parents, Sam & Edee Marshall.

2008 Annual Theme Passage

His divine power has given us everything we need for life and godliness through our knowledge of him who called us by his own glory and goodness. Through these he has given us his very great and precious promises, so that through them you may participate in the divine nature and escape the corruption in the world caused by evil desires. For this very reason, make every effort to add to your faith goodness; and to goodness, knowledge; and to knowledge, self-control; and to self-control, perseverance; and to perseverance, godliness; and to godliness, brotherly kindness; and to brotherly kindness, love. For if you possess these qualities in increasing measure, they will keep you from being ineffective and unproductive in your knowledge of our Lord Jesus Christ. *2 Peter 1:3-8*

Guests, please join us after the service in the **Newcomers' Suite** (Central Foyer) to visit with Chapel leadership.

Our Mission and Vision

Williamsburg Community Chapel is an interdenominational family of faith called to make disciples of Jesus Christ by:

- meeting people where they are on their spiritual journey,
- getting people into God's Word and God's Word into people,
- and preparing believers for works of service to foster unity and maturity in the Body of Christ. *Matt. 28:19-20, Eph. 4:12-13*

2008 GENERAL FUND

	September	Year-to-date (through Sept.)
Offerings	\$ 294,932	\$ 2,309,801
Expenses	\$ 302,123	\$ 2,520,860
Variance	\$ - 7,191	\$ - 211,059

STEWARDSHIP NOTE:

A dated bank record or receipt must accompany all charitable cash tax deductions. We encourage contributions by check with the fund to be designated indicated on the memo section of your check. *All undesignated checks are credited to the General Fund.*

BUILDING THE CHURCH CAMPAIGN

Project Cost	\$ 16,100,000*	*Excludes financing cost
Faith Promises Received	\$ 11,412,938	
Variance	\$ - 4,687,062	

Loan Repayments	\$ 242,000
Loan Balance (August 31, 2008)	\$ 7,525,788*

	September	Year-to-date (through Sept.)
Interest Paid	\$ 38,163	\$ 318,869

Learn about the *Building the Church Campaign*: www.buildingthechurch.org.

PASTORS & STAFF*

Bill Warrick *Senior Pastor*
Jon Ritner *Associate Pastor*
Rob Campbell *Executive of Administration*
Arlene Vander Loon *Minister of Education*
Travis Simone *Minister of Students*
Pat Cummings *Minister of Community*
Ted Cornell *Minister of Worship*
Steve Hooge *Minister of Production Services*
Andrew Petty *Minister of Communications*

Dick Woodward *Pastor Emeritus*

* Partial list

ELDERS

Butch Palmer, Chairman
Harry Borbe
Sonny Bowers
Karl Muller
Fred Nice
John Paine
Glenn Palmer
Bob Pfeifer
Dave Rudy



3899 John Tyler Hwy.
Williamsburg, VA 23185
757-229-7152
www.wcchapel.org