


ORDER OF WORSHIP

 FEBRUARY 5, 2012

Worship Through Praise

* Hymn 96 *All Hail the Power of Jesus' Name*
verses 1 and 4 Vance Stallings

Welcome Bill Warrick
Senior Pastor

* Celebration and Worship *The Name of the Lord*
Lord, I Lift Your Name on High
Glorify Thy Name
There's Something About That Name

Morning Prayer Travis Simone
Associate Pastor

Worship Through Giving

Choral Offertory *And Can It Be*
Nancy Luzar, *pianist*

And can it be that I should gain an interest
in the Savior's blood?
Died He for me, who caused His pain?
For me, who Him to death pursued?
Amazing love! How can it be that Thou,
my God, shouldst die for me?
Amazing love! How can it be that Thou,
my God, shouldst die for me?

He left his Father's throne above; so free,
so infinite His Grace.
Emptied Himself of all but love, and bled
for Adam's helpless race.
'Tis mercy all, immense and free, for,
O my God, it found out me.
Amazing love! How can it be that Thou,
my God, shouldst die for me?

Reaching Out: Agape Ministry

Worship Through God's Word

* Scripture Lesson Acts 2:42-47 (p. 1079)

Morning Message *The Introduction to Acts: Conclusion*
How to Grow A Church God's Way
Acts 2:47 Bill Warrick
Senior Pastor

Service of Communion
Special Music: Elizabeth Elliott

* Closing Chorus *We Worship and Adore You*

* Benediction

* *Congregation Standing*

Associate Pastor, Jon Ritner, is away speaking at the Peninsula Community Chapel Marriage Retreat this weekend in Norfolk.

LOVE & RESPECT

Live Relationship Conference
 Fri. evening, Feb. 24, 6:45-9:45 p.m. and
 Sat. morning, Feb. 25, 8:45 a.m.-12:45 p.m.

The Chapel will host a *live* Love & Respect Conference featuring Dr. Emerson & Sarah Eggerichs. Dr. Emerson Eggerichs is an internationally-known public speaker on the topic of male-female relationships. He is the founder and president of Love & Respect Ministries, and Sarah serves as Vice President. **IMPORTANT! For L&R Conference Participants Who Call the Chapel Home:** Consider volunteering to sit in the Student Ministries' Worship Room to participate via live simulcast. This will provide a seat for a community guest in the main Worship Room, which is a great way to practice our 2012 ministry theme *Reaching Out*. Please let us know if you will be one of the 700 participants. So far, 325 people have volunteered to sit in the Student Ministries' Worship Room. Please be in prayer for the 1,350 total attendees who have signed up for the conference so far! **Contact Jon Ritner, Associate Pastor:** jnr@wcchapel.org

For more information visit: www.loveandrespect.com
 Register online: www.wcchapel.org/loveandrespect

UPCOMING EVENTS:



BIG GAME PARTY TONIGHT! 6 - 11 p.m., SM Worship Room

Come to a party for high school students to watch the big game. Juniors and seniors, please bring a dessert to share. Freshmen and sophomores, please bring chips, dip, or another snack. We will provide hot dogs and drinks. Event begins at kick-off and ends when the game is over. *If you have any questions, contact Craig Blocher, High School Assistant, 614-425-5142.*



SAINTS ALIVE (60+ or -) VALENTINE'S DAY LUNCHEON Wednesday, Feb. 8, Noon - 2 p.m., Central Foyer, Cost: \$15 for lunch

We will be collecting small toiletry items (toothbrushes, new socks, shampoo, etc) for veterans. It is optional, but donations of these types of items would be greatly appreciated! *Register online: www.wcchapel.org/registration or call the receptionist 229-7152*

VALENTINE PRESCHOOL EVENT Thursday, Feb. 9, 9:30 a.m.-12:30 p.m. Cost: \$15/child

Preschoolers (ages 2-5), come and join us for a Valentine's Party! We will watch a movie, make valentines, play games, and have a great morning with our friends. Bring a bag lunch. Pre-registration is required. To register, please contact: *Susie Calapodas, Director of Early Childhood Ministry, 941-1218, sec@wcchapel.org*

CAREER WOMEN'S FELLOWSHIP Chapel Women's Guide to Entrepreneurs: Wisdom from Christian Business Women Wednesday, Feb. 15, 6:30 p.m., meet in the Community Café, Cost: \$9

Program and Dinner
*Register online: www.wcchapel.org/registration
 Pam Rambo, 903-6511, Pamela.rambo@cox.net*



Annual Father/Grandfather with Daughter VALENTINE BANQUET

Tuesday, Feb. 7, 6:30 p.m. - 8:30 p.m.,
 Central Foyer, Cost: \$50 per couple
 A special evening for fathers or grandfathers to honor their daughters (ages 8-18).
Register online: www.wcchapel.org/registration

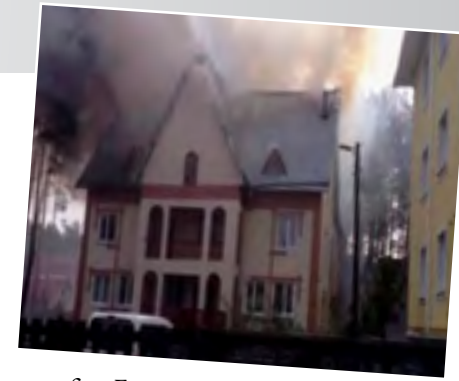


SERVING OPPORTUNITY IN UKRAINE

Feb. 26 - March 10

Cost: \$1300 (includes flights and all in-country expenses)

Join a team to help Nicolay Revtov, Director of EE Eurasia (longtime partner of the Chapel), rebuild the Evangelism Explosion Training Center after it was destroyed by a recent fire. For more information contact *Stephen Kish, team leader: 869-8435, skish@ball.com or Faith Halverson Olson, Director of Global and Local Engagement: 941-1208, folson@wcchapel.org*



Families came together on Friday, Jan. 27 to help our kids practice our Chapel 2012 theme, *Reaching Out!* Food Services provided a delicious meal followed by worship and a fun program. Our next Family, I.N.C. is Sunday, June 3, focusing on kids' baptisms. Contact: *Arlene Vander Loon, Minister of Education: 941-1578, avanderloon@wcchapel.org*



HIGH SCHOOL SKI TRIP

Jan. 26 - 29 • Seven Springs Mountain Resort, PA

Last weekend, 149 high school students went on the high school ski trip. Not only did they experience great times on the slopes, but they also encountered Christ in a new way through a dynamic speaker and small group time with their leaders.



SERVE THE CITY: Williamsburg

Saturday, April 21
9 a.m. - 4 p.m.

(Celebration service following)

In our year of focusing on *Reaching Out*, the entire Chapel family is invited and encouraged to participate in a day of serving our community. Small groups, students, families, individuals — we will spread out all over Greater Williamsburg to serve organizations and families in need. Plan to be part of this exciting day as together we exercise our faith by “being Jesus with skin on” in our community. We will gather at 9 a.m. for orientation and then return to the Chapel at 4 p.m. for a time of celebration. Childcare (birth-5 years) will be available from 9 a.m. - Noon. Registration will begin March 11! *Faith Halverson Olson, Director of Global and Local Engagement: 941-1208, folsom@wchapel.org*



WHAT IS YOUR NEXT STEP?:

Are you new to the Chapel? Are you ready to join a group and get into the Word? What

gifts has God given you to use in His ministry service? How can you serve others?

Scripture reveals a common pathway to commitment in our relationship with God. The “4Es” are our way of describing that pathway:

Encounter - Embrace - Exercise - Engage

Wherever you are on your spiritual journey, there are opportunities that will help you take your own unique next steps along our common spiritual pathway. View the *Winter 2012 Ministry Guide* to see a list of opportunities (January through March), or stop by *Information Central* in the Central Foyer on Sunday mornings for more information on getting connected at the Chapel.



2012 BIBLE READING PLANS

Start the year off right by getting in God's Word. New this year: Bible reading plans that complement the Sunday morning sermon series. Series reading plan includes both scripture passages and reflection questions for deeper application of God's Word. Pick up a copy of this year's Bible reading plans at *Information Central* or go online to view or print out a copy: www.wchapel.org/readingguides



Vine Life:

*Adult Discipleship
and Equipping Classes*

For a complete description of available classes and to register, visit online at: www.wchapel.org/vinelife or view the list in the *Winter 2012 Ministry Guide*. Classes are held on Sunday mornings and Monday evenings. Contact: *Arlene Vander Loon, Minister of Education: 941-1578, avanderloon@wchapel.org*

Beginning Soon!

DISCOVER U: SERVING GOD'S WAY

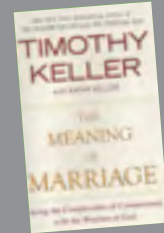
Feb. 19 and 26 (2 weeks), Room 118

Facilitator: *Elizabeth Duncan, 941-1570, eduncan@wchapel.org*

EXERCISE your faith in Jesus by exploring your gifts, talents, and passions and how to apply them through acts of service.

Resource Center

Hours:
Sundays, 9:45 a.m. - 12:45 p.m.
Wednesdays, 9 a.m. - 1 p.m.
Fridays, 10 a.m. - 12 p.m.
(on Story Truths days)



The Chapel's Resource Center (located in the East Foyer) provides a good selection of books, movies, gifts, and small group materials that you can borrow or purchase.

NOW AVAILABLE:
The Meaning of Marriage by Timothy Keller



Fridays through April 27, 10:45 a.m. (excluding April 6) Preschoolers and their caregivers: Come join the excitement of a story time in which God's Truth is shared with preschoolers in an energetic and nurturing environment.



Hours:
Sunday mornings and
Tuesday - Friday,
8 a.m. - 2 p.m.

Call ahead for large groups or carry-out:
941-1226



Follow the Community Café
on Facebook

Today's Ministry Spotlight

AGAPE: Love Offerings Amongst Us

The Agape Ministry exists to glorify Christ by sharing His love in offering financial assistance to people, within the Chapel family and in our community, who are in crisis. To apply for assistance, pick up an application from the reception desk during regular business hours or request an application by e-mail at agape@wchapel.org. If you are interested in becoming a Chapel Budget Counselor volunteer, please sign up at today's Ministry Spotlight in the East 4 Foyer.

The Agape fund is supported by the love offering collected each Communion Sunday, and it helped hundreds of families last year.

"I WOULD LIKE TO THANK (MY BUDGET COUNSELOR) AND EVERYONE at Williamsburg Community Chapel for all the assistance that was extended toward my family during our time of need. Your help was truly a blessing ..."

"I AM SO GRATEFUL TO ... THE CHAPEL FOR YOUR DILIGENCE AND SUPPORT in obtaining (heating fuel) for us. Every morning I wake and thank God for the blessing He has sent me ... You have been so understanding, without condemnation. May God bless you in your daily work!"

"DEAR CHAPEL FAMILY, I AM SO APPRECIATIVE ... My neighbor is a member of the Chapel and called on my behalf last summer when my power had been shut off due to insufficient funds. I am blind and unable to get around well in my home or even to pay bills on a regular basis. A pastor from your church showed up and came into my home. The temperature was over 100 degrees, and I had fallen on the floor, unable to move. He found me and called 911 to get medical aid. What an angel of mercy as he got my power restored in one day ... I have no family and had given up on so many things in life, but your church showed me a new loving family—one I had never known. Thank you for showing me the love of Jesus through your service to me."

"BEING A PART OF THE CHAPEL FAMILY FOR THE LAST THREE YEARS HAS BEEN A WONDERFUL PART OF OUR FAMILY'S LIVES. We have always felt at home here. When our family was in financial need, we were overwhelmed at the support and help that was given by the Chapel's Agape fund. We were lifted up at a time when we could not lift ourselves. We were given hope and encouragement when we had little. We are so grateful to the Chapel for everything that they have done to help us. We also realized, in receiving this assistance, that the Agape fund is made up of selfless offerings that come from members of our church family each time the Agape baskets are left outside the Worship Room doors. At first, this would seem like something that would come as an easy thing to do—drop a few dollars in a basket, but it's so much more. Knowing that people are essentially taking money out of their own family's pockets to give to others means more than perhaps ANY of us imagine. It's a personal decision to do this without reservation, and it was a personal blessing to our family to have been recipients of a giving Chapel family."

Family News • We would like to extend our prayers and sympathy to **Ed** and **Gloria Good** in the passing of Gloria's oldest brother, **Bob Schaefer**. A memorial service was held this past Tuesday in Newport News.

Guests • Please take a moment to fill out the Guest Register as it is passed down your aisle, and please stop by the Newcomer's Corner in the Central Foyer after the service. Members of our **Welcome Team** are available in the Newcomer's Corner and at *Information Central* to answer your questions about the Chapel and how to get connected.

Prayer • After the service, members of our **Prayer Team** are available for prayer at the front of the Worship Room. If we can pray for you or for a specific need during the week, please let the Chapel Prayer Chain know by calling 229-7152 or by completing the prayer submission form online: www.wcchapel.org/prayer

Our Mission & Vision • *Matt. 28:19-20, Eph. 4:12-13*

Williamsburg Community Chapel is an interdenominational family of faith called to make disciples of Jesus Christ by:

- meeting people where they are on their spiritual journey,
- getting people into God's Word and God's Word into people,
- and preparing believers for works of service to foster unity and maturity in the Body of Christ.

Pastors & Staff (Partial List)

Bill Warrick *Senior Pastor*

Jon Ritner *Associate Pastor*

Travis Simone *Associate Pastor*

Rob Campbell *Executive of Administration*

Arlene Vander Loon *Minister of Education*

Pat Cummings *Minister of Community*

Ted Cornell *Minister of Worship*

Faith Halverson Olson

Director of Global and Local Engagement

John Green *Director of Community Care*

Dick Woodward *Pastor Emeritus*

Elders

Steve Barrs

Fred Nice

John Paine

Glenn Palmer

Bob Pfeifer

Dan Roper

Dave Rudy *Chairman*

Steve Stafford

Mike Stump

Bill Warrick *Teaching Elder*

To learn more about the Chapel, the pastors, and the staff, visit: www.wcchapel.org/about

2012 GENERAL FUND SUMMARY: Year-to-Date Jan. 29, 2012

	JANUARY	ANNUAL
2012 General Fund Budget	\$298,279	\$3,885,500
2012 Actual General Fund Offerings	\$318,282	\$ 318,282
Variance	\$ 20,003	-\$3,567,218

GREATER THINGS STEWARDSHIP CAMPAIGN (GTC)*

By God's grace the GTC offerings received in 2011 enabled us to reduce our outstanding loan balance to \$2.6 million in January 2012

2012 GTC Offerings target	\$1,750,000
2012 Actual GTC Offerings through Jan. 29, 2012	\$156,646
Remaining to meet 2012 target	\$1,593,354

Meeting the 2012 GTC Offerings target will enable us to reduce the outstanding loan balance to \$1.3 Million at the end of 2012.

* Offerings to the GTC are only used for building debt reduction (includes interest). Learn more about the GTC by calling **Tina Harrell, Manager of Finance, 941-1567**.

ALL GIVING

Please make checks payable to Williamsburg Community Chapel. All undesignated checks are credited to the General Fund. Please use the memo area of your check to note designations.

For Sunday audio, the *Order of Worship/Weekly*, online registration, detailed calendar, ministry info, upcoming events, or to register for our weekly email, visit: www.wcchapel.org



3899 John Tyler Hwy.
Williamsburg, VA 23185
757-229-7152



Follow the Chapel
on Facebook